

Tandvårdsstöd
Care Provider Interfaces
Payment Specification v2

IT-product

Date

Version

Payment Specification v2

2016-05-30

Rev H

Versions

Version	Date	Changes	Name
RevA	2008-03-03	First version	
RevB	2008-03-11	Minor changes made to mapping comments. Updated XML sample.	
RevC	2008-04-18	<ul style="list-style-type: none"> Moved organization-number from FK.PaymentSpecificationResponse to GetMessageResponse in XML. Updated XML samples. Updated message description. Updated BAPI parameter names to match the ones in SAP. Added export parameter CRM_CLINIC_ID to the line item structure in mappings. Changed mapping table. Added IT_PAYMENT_DETAIL_HEADER\ to the fields that are under this stucture. Updated BAPI name for push interface 	
RevD	2008-11-20	<ul style="list-style-type: none"> Added fields to the Payment Specification Response message: <ul style="list-style-type: none"> Social Security Number Foreign Identity Number Original Case ID Updated format slightly Updated reference to functional specification Updated requirement owner to Håkan Falk 	
RevE	2008-12-15	<ul style="list-style-type: none"> New version (v2) Adjusted the interface contract to fit the defined strategy for backward compatibility. If payment specification is on a correction of a correction, the original-claim-id will not show, the corrected correction case id, but the original claim id. Added missing data types. Updated data type for Payment ID. Updated BAPI parameter name for the Payment ID. Updated Sample XML. Smaller updates of the architecture and sequence diagrams Smaller format updates Updated length of claim amount and total amount to 13,2 	
RevF	2009-02-10	<ul style="list-style-type: none"> Update asynchronous BAPI name for push message Added program ID registered by ESB Updated BAPI field names 	
RevG	2015-02-24	<ul style="list-style-type: none"> Updated contract according to new architecture from TVS R4. Signed-off	Lars Dalenius

IT-product

Date

Version

Payment Specification v2

2016-05-30

Rev H

Version	Date	Changes	Name
RevH	2016-05-30	<ul style="list-style-type: none"> Added "Complex Type" in tables for grouped elements, i.e. yellow lines, since this is the type used in the xml-schema. Changed "foreign-identity-number", new value=char(20), old value=char(60) Updated using new template, no text changed. Updated statistics. 	Lars Dalenius

Attachment- and reference list

Number	Title, document ID, search path	Version
1	Solman: 002_06_01_I-021PaymentSpecification.doc	
2	Solman: 009_20_xml_schema_pack	
4	Grupprum Tandvårdsstöd förvaltning, typ=Systemdokument: Teknisk arkitektur Tandvårdsstöd	

Table of contents

1	INTRODUCTION.....	4
2	INTEGRATIONS.....	4
3	INTEGRATION 1.....	7
3.1	PAYMENT SPECIFICATION RESPONSE.....	7
3.1.1	Message and translation	7
3.1.2	Sample XML.....	9
4	VOLUMES	9

1 Introduction

IT-product	Care Provider Interfaces – PaymentSpecification.v2
Release	DecR 2015

The main information in this document is the tables which contain all parameters and their translation between XML and SAP parameters. There is some color codes used in the tables:

Color	Description
	Cells are changed or added in this version of the document.
	Parameters are removed in this version of the document.
	Parameter is not translated between XML and SAP.
	Grouping element which does not contain a single value, but several parameters.

Table 1 Overview over color codes used in the message parameter and translation tables.

2 Integrations

The Care Provider Interface "Payment Specification" makes use of one interfaces for the internal FK communication with SAP:

No	Description
1	An integration to enable the system at Försäkringskassan to send out payment specifications to the Dental Care systems.

The message will be sent out as part of a batch-job that runs the night between Monday and Tuesday every week.

The message will be sent in a synchronous fashion via the internal queue service as a WS request from SHS to the CRM end-point specified in the WSDL created in SAP-CRM. The anticipated message flow is depicted in the following diagram:

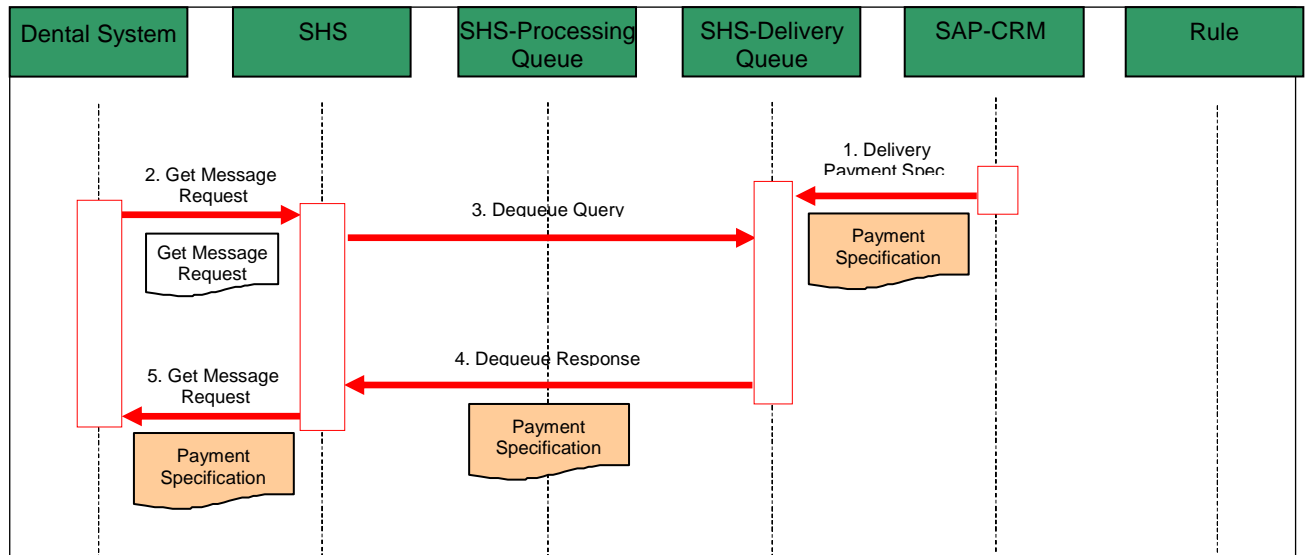


Figure 1 Sequence diagram for the PaymentSpecification interface.

Architecturally, the messages will flow in the following manner:

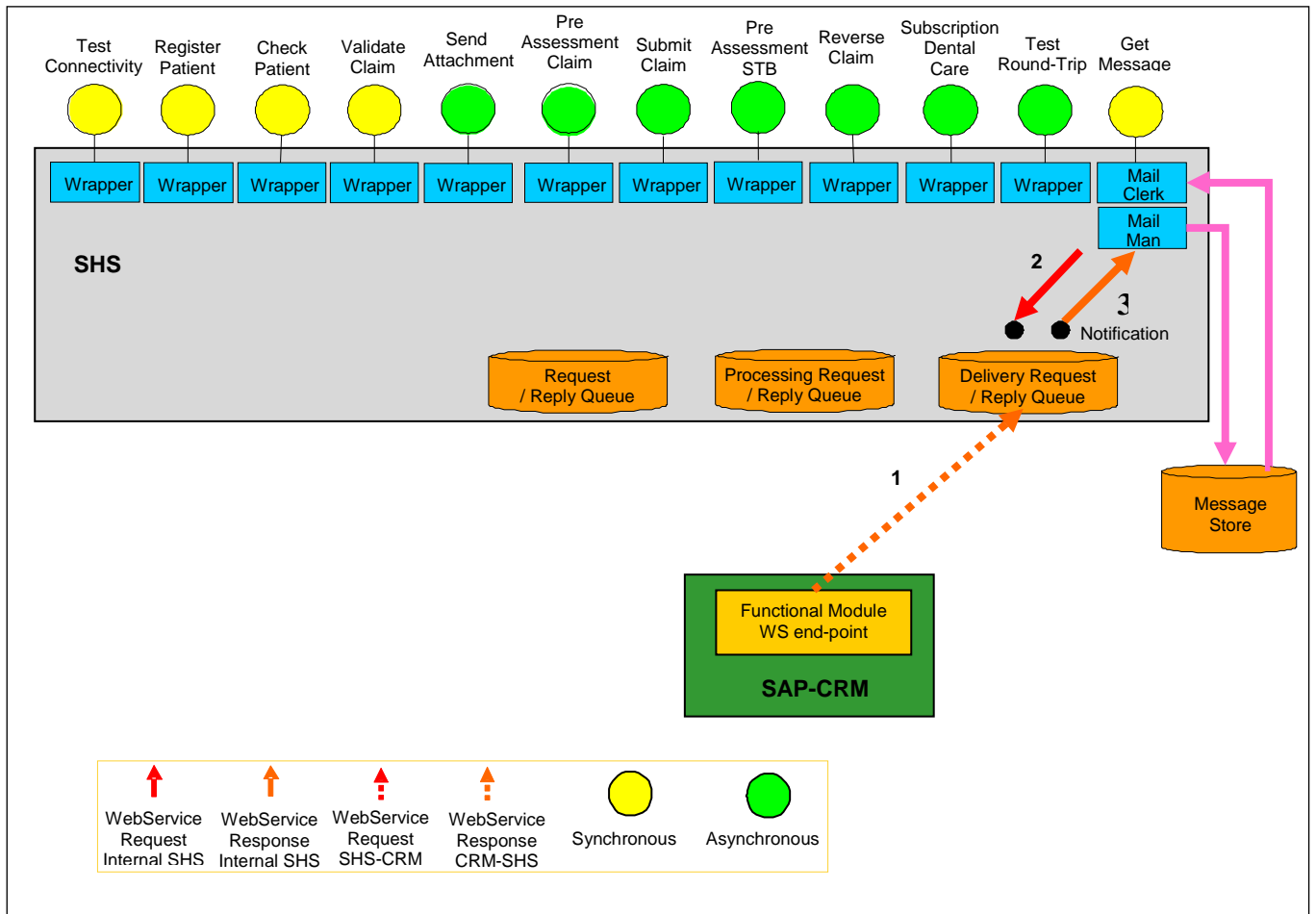


Figure 2 Architectural for the PaymentSpecification interface.

3 Integration 1

The interface is invoked by SAP at a certain time. This means that there will not be a request sent by the dental care system.

3.1 Payment Specification response

3.1.1 Message and translation

SAP		XML			Transformation info.		Details	
Parameter	Name	Element / Attribute	Optional	Data type	Comp.	Transformation	Description	Comments
	request-id	Attribute		char (36)			SHS generates a request-id.	The request-id will not be used for tracking purposes since there is no request.
ET_ZTV_PAY_H\ORGANIZATION_NO	organization-number	Attribute		int (10)	No	No	The organizational number for the care provider	The organization-number will not be used for tracking purposes since it is usually copied from a request.
ET_ZTV_PAY_H\CRM_CLINIC_ID	clinic-id	Element		int (8)	No	No	The clinic ID assigned by FK	
ET_ZTV_PAY_H\PAYMENT_REF_ID	payment-id	Element		Int (11)	No	Remove leading zeroes in value returned from CRM. For example 00000123 would become 123	ID created by CRM to track payment specifications.	
ET_ZTV_PAY_H\TOT_REIMB_AMOUNT	total-amount	Element		float (13,2)	No	No	The total amount of all the claims in the specification.	
ET_ZTV_PAY_H\ISSUE_DATE	issue_date	Element		date	No	No	The date on which the payment was issued.	

IT-product

Date

Version

Payment Specification v2

2016-05-30

Rev H

SAP	XML				Transformation info.		Details	
Parameter	Name	Element / Attribute	Optional	Data type	Comp.	Transformation	Description	Comments
ET_ZTV_PAY_I\CLINIC_ID							The clinic ID assigned by FK	The clinic id returned on the item line level must match the clinic id returned in the header.
	reimbursed-claim	Complex Type						
ET_ZTV_PAY_I\CLAIM_ID	reimbursed-claim/ claim-id	Element		int (10)	No	No	Identifies the claim ID. There will be multiple claims sent in as part of the function.	
ET_ZTV_PAY_I\CLAIM_AMOUNT	reimbursed-claim/ claim-amount	Element		float (13,2)	No	No	The amount of the specific claim.	
ET_ZTV_PAY_I\SOCIAL_SEC_NR	reimbursed-claim/ social-security-number	Element	(see comment)	int (12)	No	No	The Swedish Social Security Number of the patient.	If the patient is not a Swedish citizen, this parameter will not exist.
ET_ZTV_PAY_I\FOREIGN_ID_NR	reimbursed-claim/ foreign-identity-number	Element	(see comment)	char (20)	No	No	The EU Certificate number for the EU citizens or the passport number for the foreigners from the convention countries.	If the patient is a Swedish Citizen, this parameter will not exist.
ET_ZTV_PAY_I\ORIG_CLAIM_ID	reimbursed-claim/ original-claim-id	Element	X	int (10)	No	No	If supplied "claim-id" is actually a correction case, this field will contain the original Claim ID.	If the specified Claim is actually a Correction Case, this field will contain the original claim ID, NOT the correction case ID. If the specified Claim is the original Case, this parameter will not exist.

Table 2 Overview over the parameters and their translation for the PaymentSpecification Response message.

3.1.2 Sample XML

The following sample message demonstrates a typical specification message:

```
<FK.TV.GetMessageResponse
  xmlns="http://fk.se/SHS/xsd/tanden"
  xmlns:xsi="http://www.w3.org/2001/XMLSchema-instance"
  xsi:schemaLocation="http://fk.se/SHS/xsd/tanden ../TandenTypes.xsd"
  request-id="b123a321-ab92-af01-af22-98739237ba23"
  organization-number="2929291234">
  <PaymentSpecificationResponse.v2 request-id="a4924e42-4214-ba93-af22-98739237ba23">
    <clinic-id>33312345</clinic-id>
    <payment-id>08121012345</payment-id>
    <total-amount>250.00</total-amount>
    <issue-date>2008-09-14</issue-date>
    <reimbursed-claim>
      <claim-id>8000000111</claim-id>
      <claim-amount>300.00</claim-amount>
      <social-security-number>198003141234</social-security-number>
    </reimbursed-claim>
    <reimbursed-claim>
      <claim-id>8000000112</claim-id>
      <claim-amount>-200.00</claim-amount>
      <social-security-number>198305043754</social-security-number>
      <original-claim-id>3485934658</original-claim-id>
    </reimbursed-claim>
    <reimbursed-claim>
      <claim-id>5123412</claim-id>
      <claim-amount>150.00</claim-amount>
      <foreign-identity-number>EU 125678 A15</foreign-identity-number>
    </reimbursed-claim>
  </PaymentSpecificationResponse.v2>
</FK.TV.GetMessageResponse>
```

Figure 3 Sample XML for the PaymentSpecification response.

4 Volumes

The Payment Specifications are generated in a batch job that is scheduled to run the night between Monday and Tuesday. The amounts are checked during daytime Tuesday and if no errors are found they are normally delivered to Dental Care systems on Tuesday a.m.

The following data is based on the total traffic during April 2016 (30 days).

per Year	per Month	per Week	Size
178 008	14 834	-	-

Table 3 Preliminary forecast for the volumes of PaymentSpecification requests.